



SongFrame

Songwriter's Toolkit Software

For Windows XP/Vista



SongFrame Overview

Songwriting tools just reached a new level with the release of SongFrame. SongFrame is the song development toolkit designed to provide songwriters and recording musicians an integrated and comprehensive set of tools for writing and refining songs. In addition to serving as an overall notebook for a songwriter's ideas, SongFrame allows the user to construct songs using drag & drop icons representing song structure elements and then fully develop every aspect of the song within these.

SongFrame is used before the songwriter ever fires up his or her Digital Audio Workstation (DAW) recording or sequencing software. As the name implies - SongFrame creates the framework, foundation and super-structure of a song prior to the recording, arrangement and production process. Think of SongFrame as a "pre-DAW" or a songwriting front-end to your existing recording or sequencing setup.

The inspiration for a great song can come from a great idea for a title, a catchy chord progression, a melody line, an interesting rhythmic idea, or even some lyric ideas scribbled on a napkin. SongFrame allows the songwriting process to begin with any of these starting points, and completely integrates all aspects of song development in one powerful and intuitive environment.

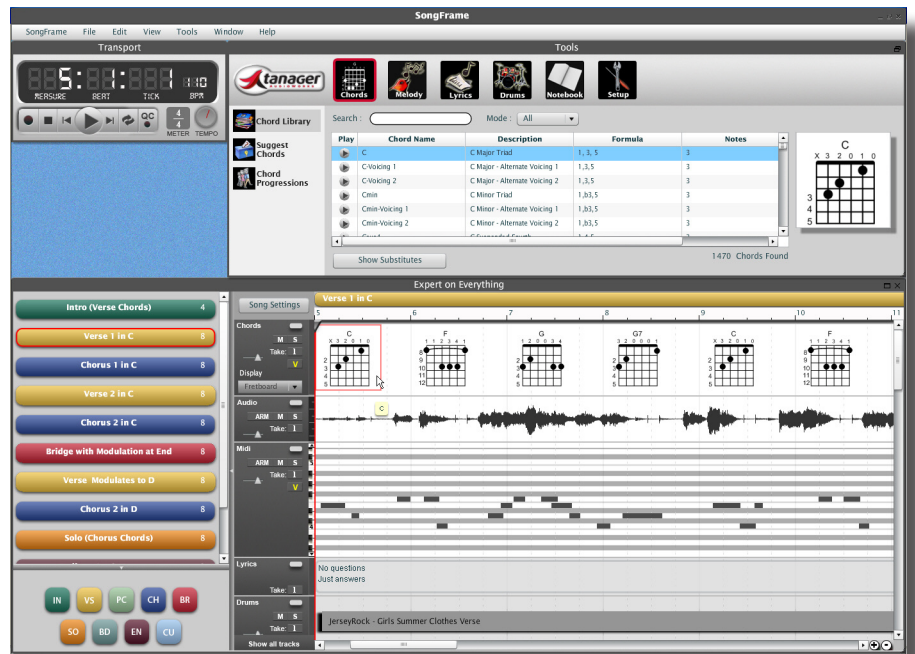
Simply put, SongFrame is a professional application that focuses on the complete songwriting process and lets the user utilize their favorite instruments and recording environment to take the "framework" of the song to completion.

Like any DAW application, SongFrame includes an audio engine, recording capability and a transport to control playback and recording. Unlike a DAW, its focus is on the song itself; structure, chord progressions, melodies, lyrics and rhythm. SongFrame exports MIDI and Audio files for easy import into any DAW application capable of importing audio and MIDI data. In addition, SongFrame works with all VST software-based synths and instruments available, allowing a songwriter to take advantage of their favorite instrument sounds while composing.

Toontrack's EZ-Drummer Lite and 4Force's Piano VST's are included with the application if the user does not have any VST instruments to use.

SongFrame can export songs for use in the studio. Exported Audio and MIDI files contain all song structure and chord markers, Audio and MIDI data, and tempo/key information, providing a head-start to the production process. In addition, SongFrame can print lead sheets for musicians to use in studio production and recording.

The tool is 100% focused on the songwriting process and the elements that make up a song—the chord progressions, the melody and the rhythm, the overall structure and the lyrics. It is the perfect companion product to a DAW recording application for songwriters and recording musicians.



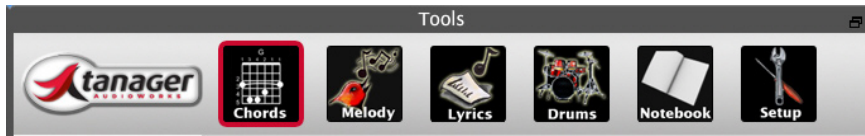
SongFrame is a song development toolkit allowing a songwriter to both organize and build song structure, chord progressions, rhythms, melodies, and lyrics in a completely integrated environment. Once a song is completed, the user can export the song in a format ready for any Digital Audio Workstation (DAW) recording application for recording and final production.

What Does SongFrame Do?

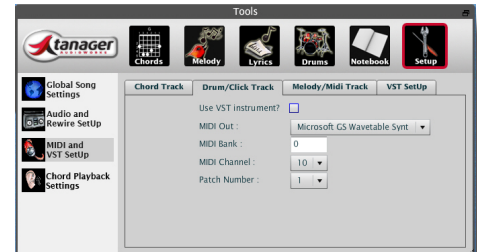
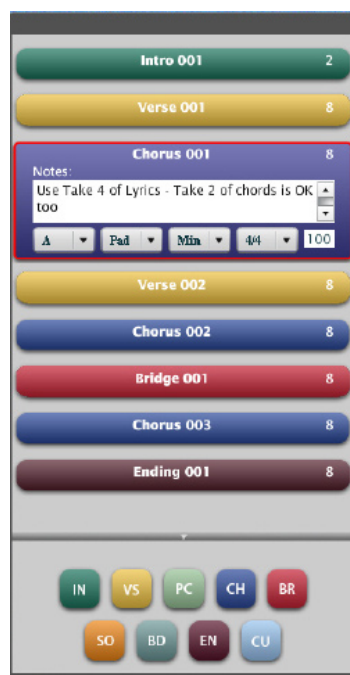
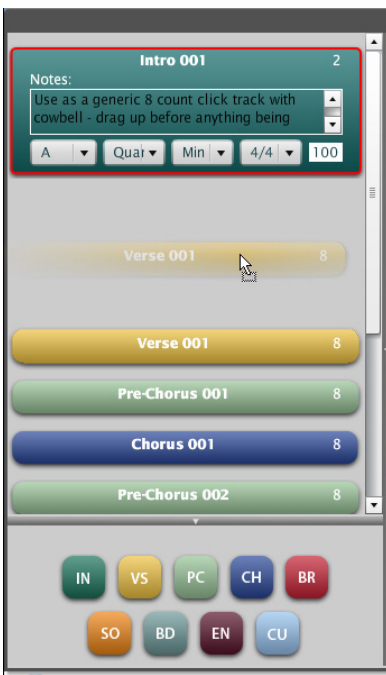
- Tools to fully develop song structure, chords and progressions, melodies, lyrics and drum tracks...
- Organizer and repository for all sorts of song bits and ideas...
- Export completed songs as MIDI and audio tracks enabling easy import to any DAW recording software application including ProTools, Cubase, Logic Pro, and SONAR...
- Works on Windows XP or Vista - Mac OS-X version available 12-2008...

Writing Songs With SongFrame

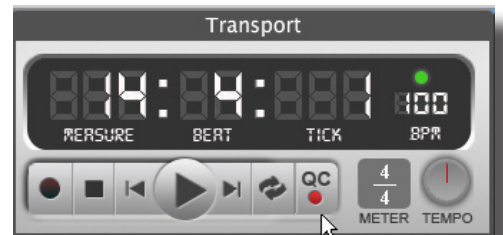
The SongFrame songwriting process can begin in any one of several places— chord progressions, melody development, song title, lyric development or beat/rhythm development. The songwriting process is about inspiration and development of ideas— SongFrame provides a one-click menu bar enabling the user to work rapidly and naturally. Songwriters can hop back and forth between all aspects of the song development freely. Structural elements of a song, such as Verse, Chorus or Intro, are represented in SongFrame by “SongBits.” A SongBit contains all audio, MIDI, chord changes, lyrics and rhythm for that section. SongBits may be freely rearranged by dragging, edited, or copied individually from your own personal notebook. In addition to the eight standard song structural elements SongFrame provides, a “Custom” SongBit serves as a container for any snippet of a song idea - an inspiring melody idea, a nice chord progression or a great lyric that might not be immediately categorized. You’ve decided that this Chorus is really better as an Ending? Right-click and its changed.



Creating a song is simple - establish the default key, temp and time signature in the Song Settings menu, and then grab a SongBit icon and drag it onto the Song Structure Pane. You can immediately start building the song up. Once you get a verse you are satisfied with, duplicate it and add lyrics or anything else you’d like.

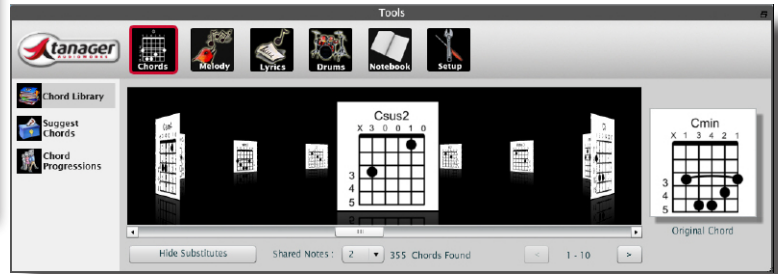
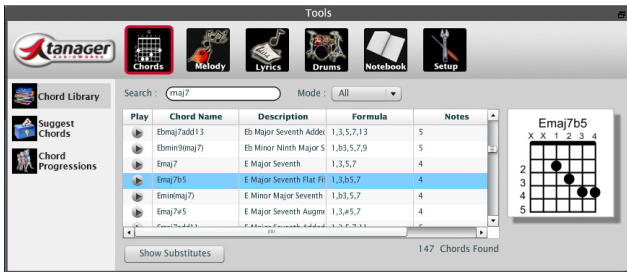


SongFrame offers the ability for a user to make use of any VST soft synths installed on their system for playback of chord, drum and melody tracks.



In addition to conventional transport controls, SongFrame offers a “QuickCapture” mode which automatically creates a new SongBit, arms both MIDI and audio tracks for recording and enters “record” mode - perfect to capture that moment of musical inspiration without worrying about setting anything up!

The Song Structure pane allows a user to simply drag and drop song form icons called “SongBits” to construct a song. Copy, paste, duplicate and rearrange SongBits to refine the song structure.

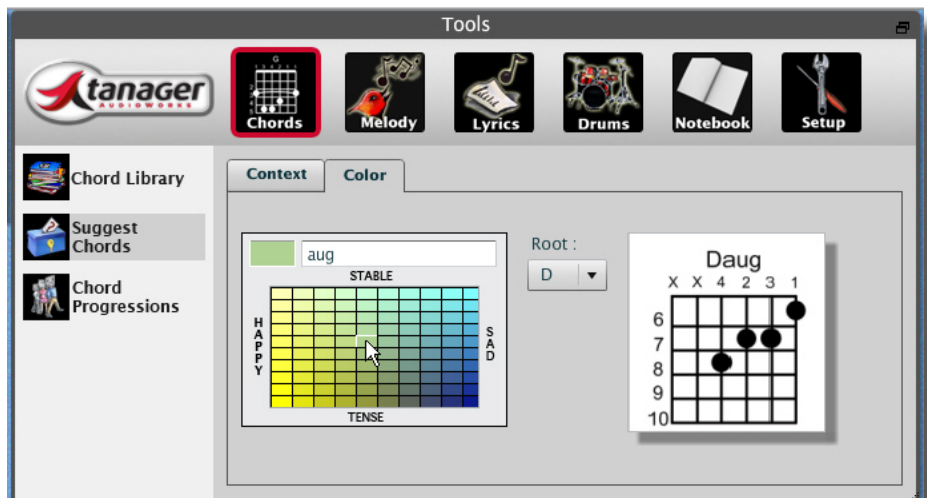
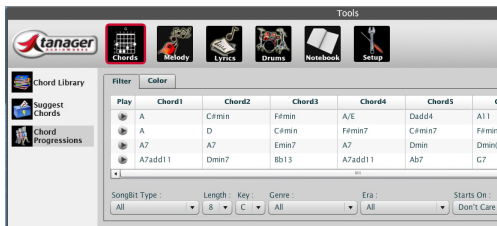


Chords and Chord Progressions

SongFrame provides a rich set of tools to help choose chords and develop interesting chord progressions. The Chords Tool contains a audible chord library of 70 chord types in every key. Easily find substitutes for any chord based on a given number of shared notes. Innovative “chord suggest” tools allow filtering by musical genre, harmonic context (what chord came before it and which will come after it) and even chord color - a 2D graphical map allowing the user to select chords based on a “happy-sad” axis as well as a “stable-tense” axis. The perfect tools to get that chord out of your head and into your song.

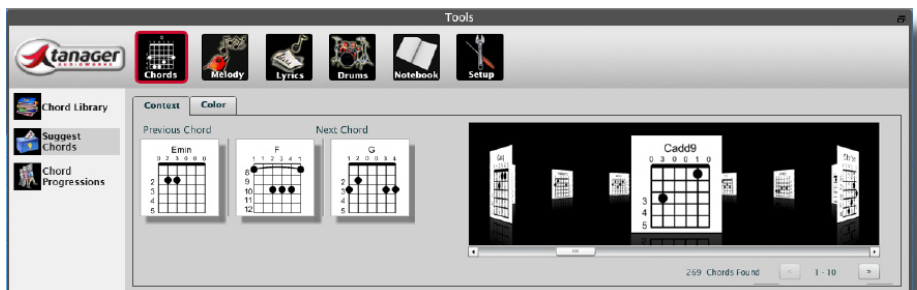
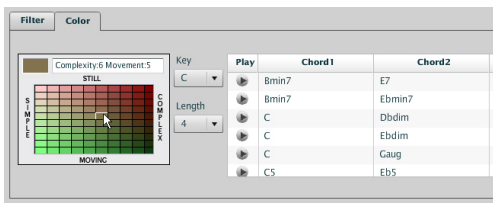
SongFrame contains chord progression snippets from real songs - literally thousands of them. The user can start with these chords and drag them verbatim or find substitutes that make musical sense and drag them into place to ensure originality. Choose how many chords in the progression you’d like for the song section you are working on - every progression will appear in the key of the SongBit you are working on. Filter by musical genre, era or the progressions “color” tool - a 2D map of by those that use simple or more complex chords, as well as amount of relative root motion. Audition chords and progressions, choose what inspires you and simply drag them down to the chord track. All previous work can be saved and recalled as “takes” - just in case the perfect progression was one you created 5 versions back!

Like the melody or drum track, chord progressions are auditioned using any VST software instrument plug-in available. Once chords are selected, they are dragged to the Chord Track. Chords can be dragged and dropped anywhere on the timeline or changed at any time. And if dragging isn’t your thing – just type chords into the track. Chords can be displayed as chord symbols or guitar fretboard diagrams.



Search for a chord progression from the library of almost 4000. Every progression will appear in the key of the SongBit you are working on, and you can audition the progressions with a click. When you find the perfect one, just drag the chords down to the chord track.

The Chord Color Tool allow the user to click on a chord in the chord track and look for a substitute based on a happy-sad dimension as well as a stable or passing chord dimension - just by hovering over a color square and clicking/auditioning.



Chord progressions can also be searched using the Progression Color Tool. This tool allows you to find chords which use simpler or more complex chords, as well as the relative movement from the root note.

In addition, find replacements by letting SongFrame look at the chord occurring before and after your chosen chord -and providing a carousel of choices from an analysis of thousands of actual songs for what may be the ideal substitute. No other songwriting tool can match the power and ease of use of SongFrame.

Melody Development

SongFrame's melody development tool provides unique tools for composition, providing a framework in which the user can develop their own musical idea, without being limited by the framework itself. SongFrame does not compose of its own – that's left to the songwriter. SongFrame does not display melodic and harmonic ranges right on the MIDI track, that can be adhered to or not. We don't keep you from coloring outside the box, in fact we encourage it! Ranges may be selected for vocal ranges or any one of over 60 instruments. Right on the MIDI track, so you know where you are in terms of what is likely to sound good.

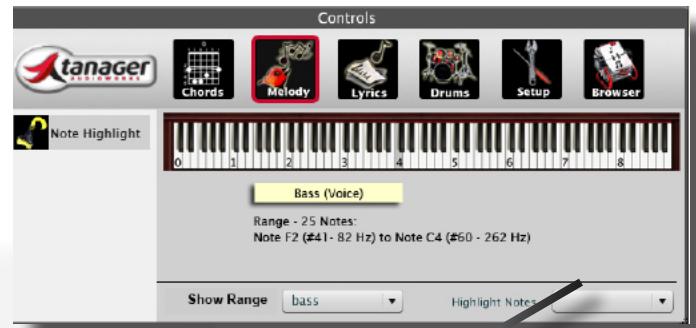
Need inspiration for your melody? Get out of the rut by experimenting with scales and modes. With one click any one of almost 150 scales and modes can be superimposed on your MIDI track, showing you scale tones that just might inspire your melodic and harmonic direction. We don't do the writing for you, but we can show you what directions are possible. Need to edit? SongFrame utilizes a "Piano Roll" style track view, allowing the user to edit pitch and note timing on the MIDI track by drawing, dragging and dropping. Easy.

The optional Tanager Chirp Virtual MIDI Keyboard Controller can be used for input right from your computer keyboard, or use any external MIDI keyboard or controller available for the task. And like the chord progression tool, any MIDI synth or available VST compatible virtual instrument plug-in can be utilized to audition the melody lines created. "Take" information is stored with each successive melody line created, allowing the songwriter to go back and hear something already auditioned or worked. So no excuses for the one that got away.

Lyric Development

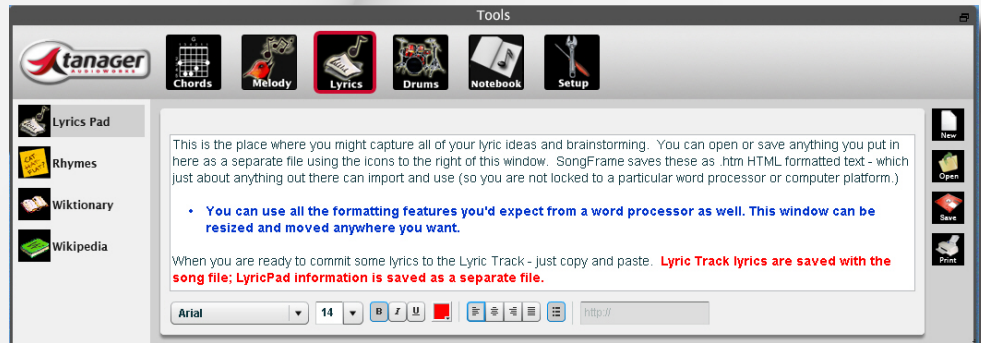
SongFrame integrates a rich set of lyric development tools as well. Once entered, lyrics appear in their own track for each SongBit in the song. In partnership with Rhymezone.com and Onelook.com, several powerful tools are available to the songwriter during lyric development, including a built in dictionary of rhymes where you can not only look up rhymes by number of syllables, letters or similar sounding consonants, but also look up phrases, similar sounding words, synonyms, definitions and related words. And if that isn't enough, a web-linked Wikipedia and Wiktionary can be accessed as well.

Need a scratch pad to work out your lyrics? Lyric ideas can be refined using the LyricPad, a word-processor like tool, and then one you are satisfied with your work, pasted into the appropriate SongBit Lyrics Track as the song message evolves. Save and load your lyrics as separate files as well. SongFrame is designed

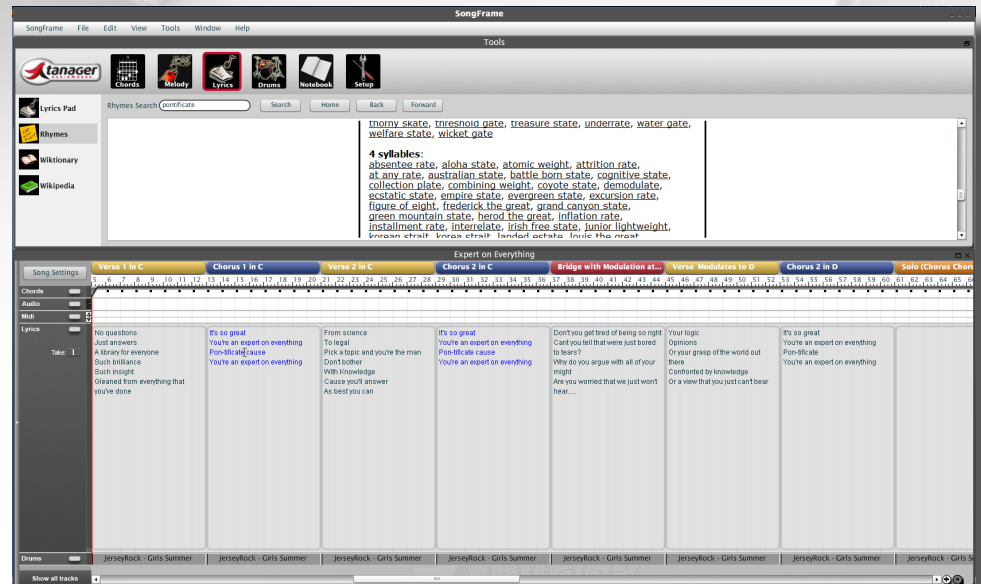


- Major
 - Ascending Melodic Minor
 - Harmonic Minor
 - Blues
- mode I 1 b3 3 4 #4 5 b7
 - mode II 1 b2 2 b3 3 5 6
 - mode III 1 b2 2 b3 b5 b6 7
 - mode IV 1 b2 2 4 5 b7 7
 - mode V 1 b2 3 b5 6 b7 7
 - mode VI 1 b3 4 b6 6 b7 7
 - mode VII 1 2 4 #4 5 b6 6

My Song



The Lyrics Pad is the place to capture all your brainstorming ideas and lyric development. Once you get something you like - copy and paste it into the Lyrics Track - or just enter text directly there if you like.



Tracks can be re-sized, and the zoom can be adjusted to see all your Lyrics Track lyrics laid out side by side. Alternate takes of your lyrics can reside behind each cell creating a powerful lyric development environment and view.

to fit your workflow. Don't need the scratch pad? Just type your lyrics right into the lyric track. (And hit save). Like audio, MIDI or chords, "Takes" of different lyrics can be saved in each SongBit allowing the songwriter to try out different lyrics without losing versions.

Drum Track

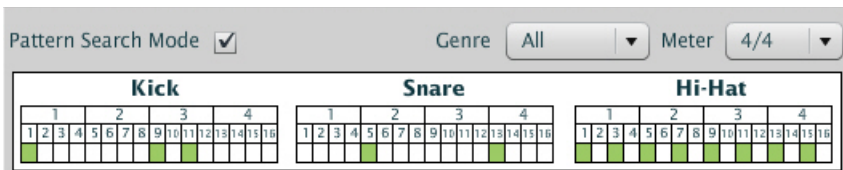
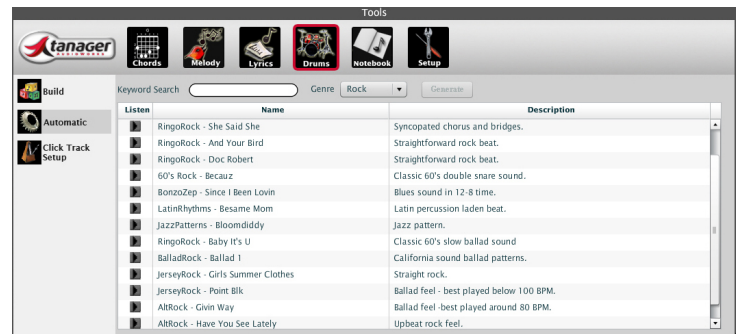
Very often a song idea begins with a drumbeat or an interesting rhythm. SongFrame includes hundreds of beats that can serve as a foundation of your musical idea. Even better, our pattern names are inspired by the real songs they emulate (like "RingoRock - Jude Verse 1" as opposed to the cryptic "BLU138" or "BA-F-133" so often found in drum loop libraries.) Audition patterns, search by genre, meter, SongBit type, key words or even enter an actual kick, snare or hi-hat hit pattern and find those that match. Listen, and drag the one you like on top of the SongBit's Drum Track. The selected pattern appears below the lyrics in the Document pane. The songwriter can now quickly build a rhythm track for the song under development. This function does not replace full featured loop/pattern composition tools, but aims to provide basic "drum track" creation capability during songwriting (and can serve as a much more inspirational click track during DAW recording!)

If the songwriter doesn't want to be bothered "building" a drum track, they can choose to let SongFrame automatically generate a complete drum track for their song. SongFrame contains a library of drum patterns that have been chosen to go well together – one click and you have a supporting drum track. Also, since the drum track uses fully GM mapped MIDI drum patterns, any software-based drum sample player using GM note mapping can be utilized for hearing the Drum Track. Upon completion of the song, a MIDI track representing the complete drum performance from Song Frame is can be exported for easy inclusion in the production DAW Project file.



Finding the right rhythm quickly is a hallmark of SongFrame. Simply choose a pattern - all modeled after real songs and labeled as such - and drag the grid entry down to your drum drag. The pattern will play for the duration of the SongBit - no matter how long it short it is. There is no need to adjust drum pattern lengths like your DAW or loop tool. Patterns in the same song style are provided and labeled for intros, verses, choruses, etc.

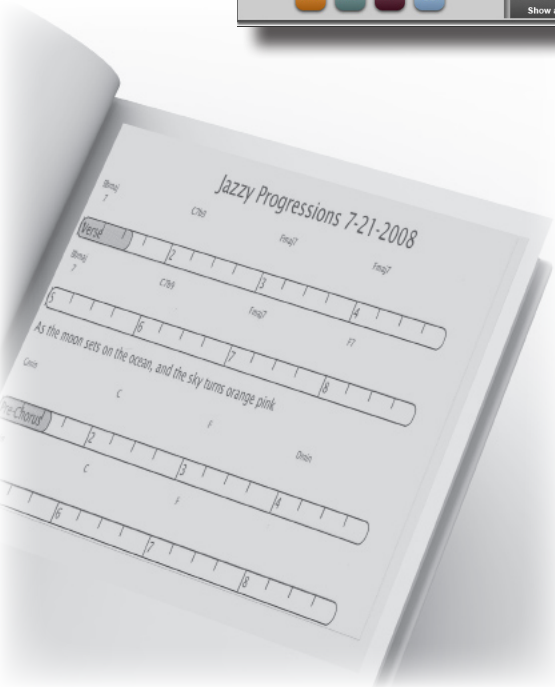
If you want to change the drum rhythm on the entire song you've created - just click on the Drums Automatic mode and choose a song style from the list. Click Generate and that's it - SongFrame builds the drum track using the correct patterns for intros, verses, etc. - while fitting it exactly to your song structure and SongBit lengths.



Can't find the perfect pattern by name? Try the Pattern Search tool - like programming a Drum machine, tell SongFrame the kic, snare or hi-hat hits you need, and it will match the patterns for you.

NoteBook

Perhaps the most powerful feature of SongFrame lies in its ability to allow you to recall any SongBit of any song you have stored on your hard drive (or ones your songwriting collaborators have sent you) quickly and easily. Want to use that Intro you worked on three weeks ago? Just drag it into your song, and all tracks from that SongBit are instantly copied. To browse your previous musical ideas, click on the Notebook icon on the main toolbar and you'll be taken to the SongFrame Notebook. A grid which shows song title, SongBit name, any notes you put in the SongBit notes section, the Music Composer, Lyricist, and SongBit Type appears - for every SongBit you have stored in your default folder on your computer. If you keep all your song files there, every SongBit you ever worked on will appear in the list. Simply find the one you want to re-visit and drag it into your song - that's it. This is ideal for utilizing bits of lyrics, chord progressions or melody ideas you came up with and set aside.

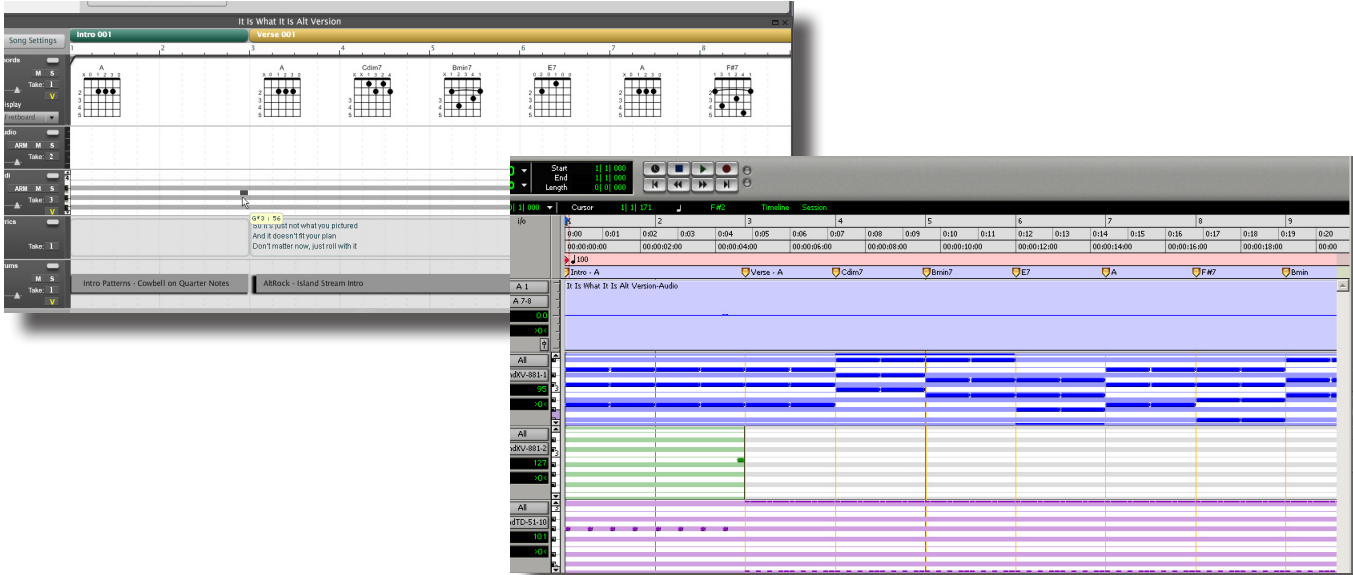


Lead Sheets

As mentioned earlier - we fully expect the next step in the songwriting process to be recording a demo of the song in your favorite DAW recording or sequencing application. SongFrame helps you do this in two ways; first, by printing lead sheets for musicians containing all chords (chord symbols or guitar fretboard diagrams) and lyrics, and second by exporting all the guide tracks and markers for every song section and chord change to audio and MIDI files easily imported by any DAW application on the market. The Lead Sheets provided are perfect for handing to your session players, or using yourself in the recording process.

Recording Your Song Outside of SongFrame

When the song is completely developed, simply choose “Export” from the File menu. An Audio Track in WAV format as well as a time-aligned MIDI track is created. The MIDI file contains the chord, MIDI/melody and drums on separate tracks - and - along with tempo, key and time signature information - timeline markers showing every SongBit name as well as every chord used in the song are created and imported to the DAW timeline – perfect for starting the arrangement and production process and speeding the recording and overdubbing workflow.



Minimum Computer Requirements

SongFrame utilizes the new Adobe AIR Framework as an integral part of the architecture. Similar to JAVA, it provides support for both PC and Mac platforms. In addition, it provides the rich user interface experience of Adobe Flash combined with the potential for stand-alone web/desktop applications. AIR drives the minimum computer requirements for SongFrame.

- Intel® Pentium® III 1GHz or faster processor
- Windows XP with Service Pack 2; Windows XP Tablet PC Edition; or Windows Vista® Home Basic, Premium, Business, Ultimate (excluding 64 bit editions at this time); Microsoft® Windows® 2000 with Service Pack 4; Windows 2003 Server
- 512MB of RAM
- 1024 by 768 resolution display - actually the bigger the display, the better experience you'll have with SongFrame.
- SongFrame will work with most any internal sound card and the standard Microsoft GS Wavetable Synth.
- Songframe supports all MIDI synthesizer hardware, VST Instruments and all external audio interfaces that support 44.1KHz/16 bit recording.

SongFrame, Chirp and Chorducopia are trademarks or registered trademarks of Tanager Audioworks, Inc. Adobe and Adobe AIR are either the registered trademark or trademark of Adobe Systems Incorporated. VST and Cubase are the trademarks or registered trademarks of Steinberg Media Technologies, GmbH. EZ-Drummer is the trademark or registered trademark of ToonTrack AB. Java is a trademark or registered trademark of Sun Microsystems. TruePianos is a trademark or registered trademark of 4Force Corporation. Pro Tools is a registered trademark of Avid Technology, Inc. SONAR and Project 5 are trademarks of Twelve Tone Systems, Inc. Digital Performer and MachFive are registered trademarks of Mark of the Unicorn Inc. Reason is a registered trademark of Propellerhead Software. Ableton and Ableton Live are trademarks of Ableton AG. ACID is a registered trademark of Sony Creative Software, Inc. in the United States and other countries. Sibelius is a registered trademark of Sibelius Software Limited. Encore is a registered trademark of GVOX, Inc. GigaStudio is a registered trademark of Tascam, Inc. Logic, GarageBand, Apple, the Apple logo, Mac, the Mac logo, Mac OS, Macintosh and QuickTime are trademarks of Apple Computer, Inc., registered in the U.S. and other countries. Windows, Windows 2000, Windows XP and DirectX are registered trademarks of Microsoft Corporation in the United States and other countries. Wikipedia® and Wiktionary are registered trademark of the Wikimedia Foundation, Inc., a U.S. registered 501(c)(3) tax-deductible nonprofit charity. All text is used under the terms of their GNU Free Documentation License. RhymeZone is a trademark or registered trademark of DataMuse Corporation. All other product and company names are trademarks or registered trademarks of their respective holders.

Copyright © 2008 Tanager AudioWorks, Inc. All rights reserved. Program Copyright © 2008 Tanager AudioWorks, Inc. All rights reserved.